



**Government of India
Ministry of MSME**

DISTRICT INDUSTRIAL PROFILE



BENGALURU RURAL

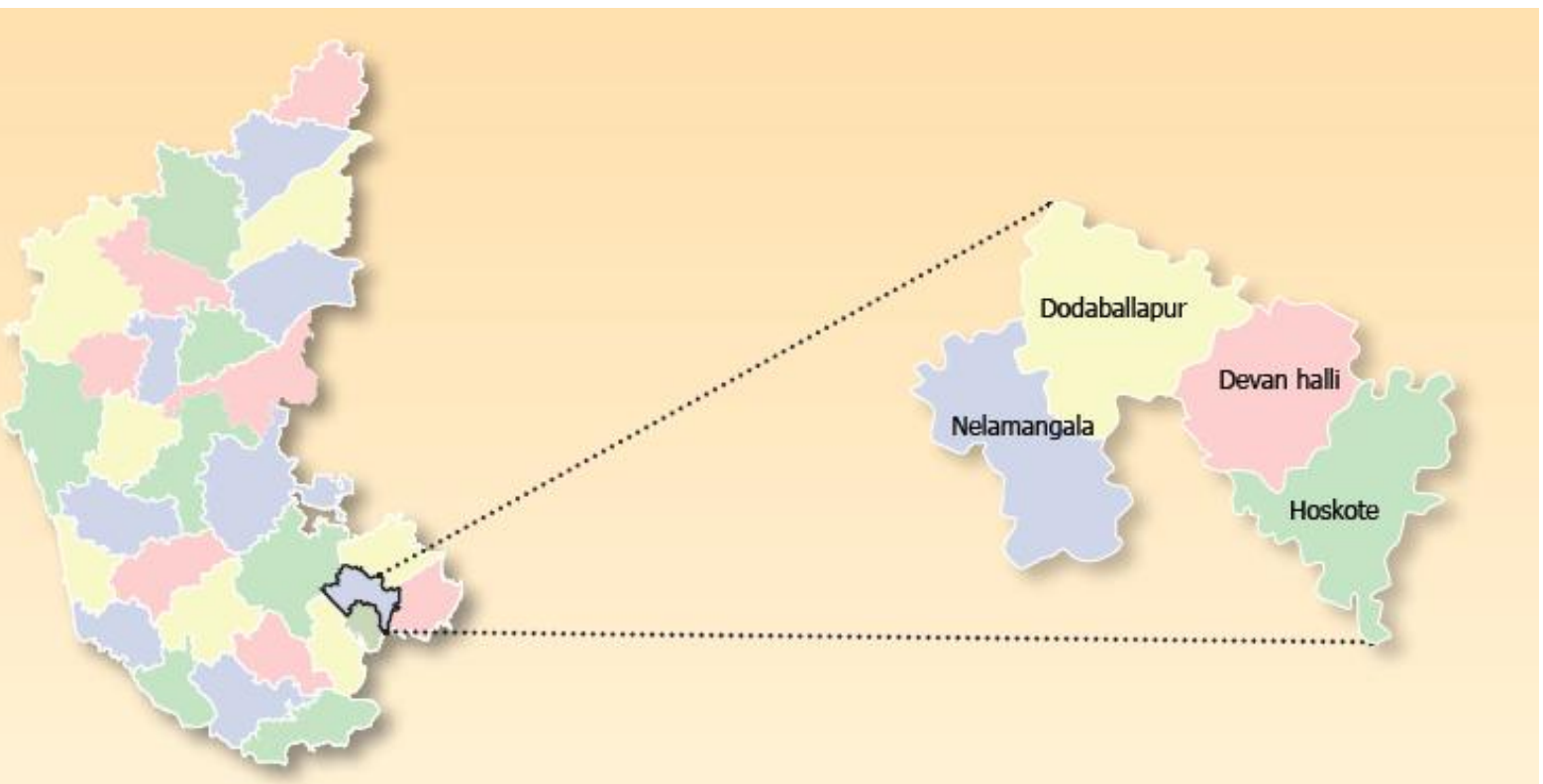
Ideal destination for investment



सूक्ष्म लघु एवं मध्यम उद्यम
MICRO, SMALL & MEDIUM ENTERPRISES

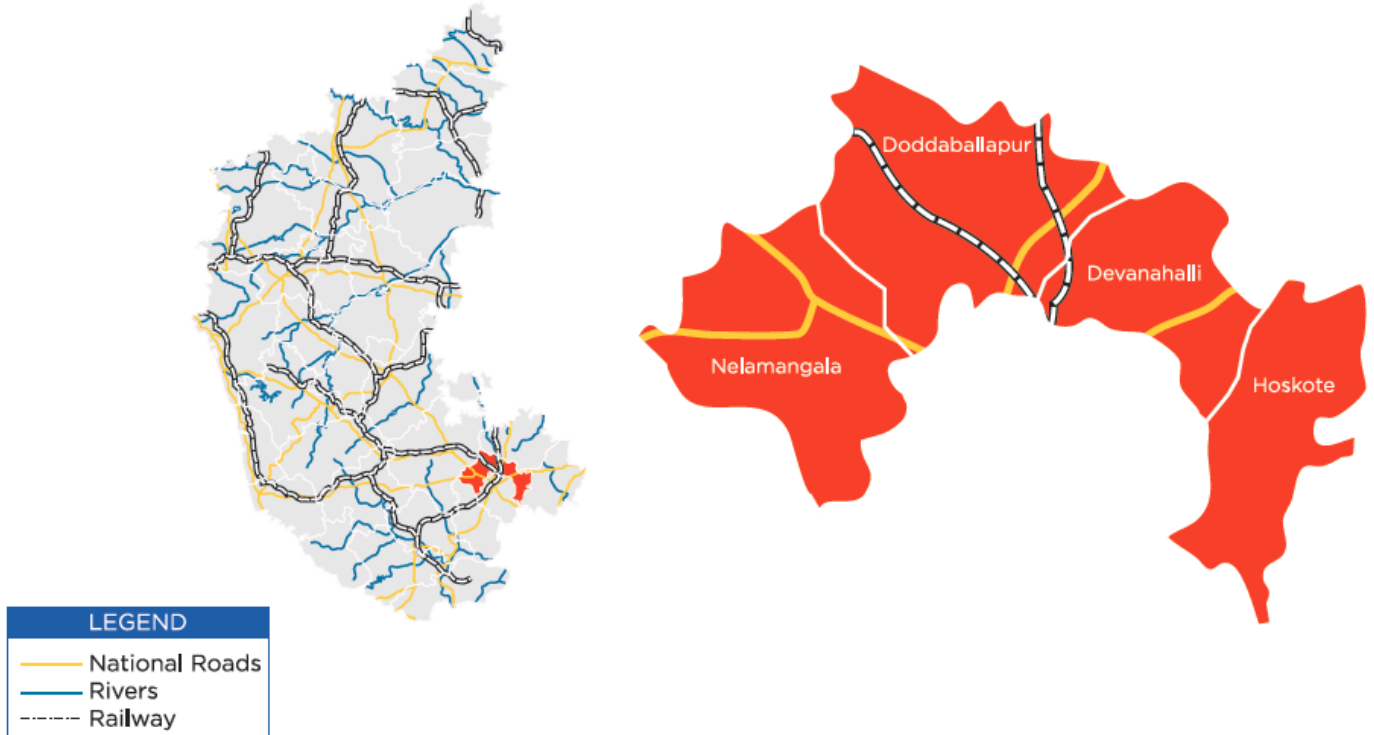
MSME-Development Institute
(Ministry of MSME, Govt. of India)
Rajaji Nagar Industrial Area, Bengaluru. - 560010
Ph: 91 080 23151581, 82, 83
Fax: 91 080 23144506
e-Mail: dcdi-bang@dcmsme.gov.in
www.msmedibangalore.gov.in

BENGALURU RURAL DISTRICT & ITS TALUKS

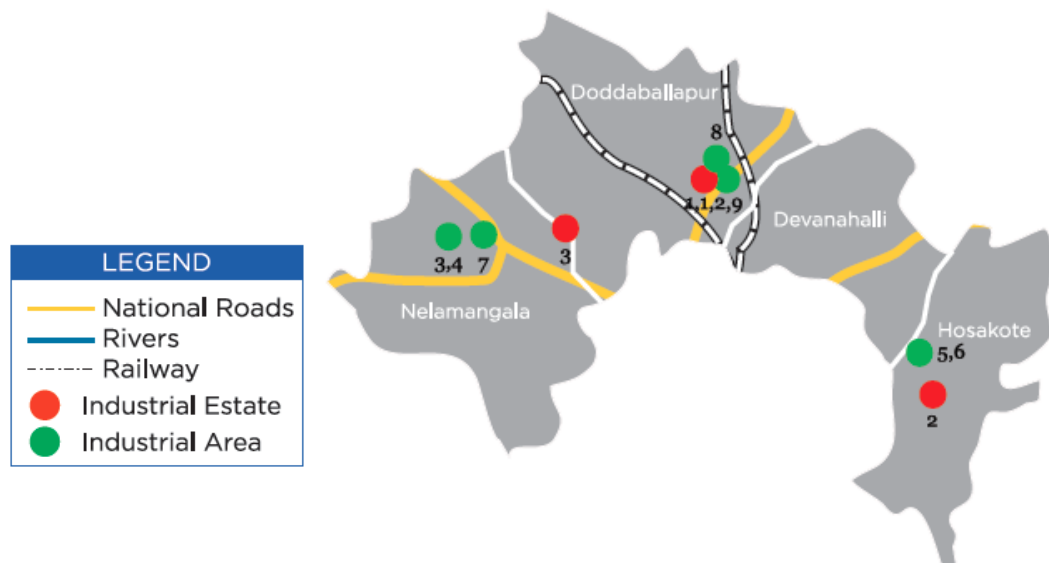


District Overview

Bengaluru Rural



Industrial Areas / Estates



FOREWORD

The Micro, Small and, Medium Enterprises, Development Institute (earlier called SISI), under Ministry of MSME, Govt. of India, Bangalore is one of the prime organizations in Karnataka, engaged in the promotion and development of Industries in the Micro, Small and Medium Enterprises. As a part of the promotional and developmental activities, the Institute conducts studies on the Status and performance of Micro, Small and Medium Enterprises in the State. The District profile is one such report compiled and updated under District Industry Development Plan of the Institute assigned by Office of the Development Commissioner (SSI), New Delhi. This report contains the present status of economy, geographical information, statistical data relating to MSME's in each district, salient features of the progress of the different sectors of the each district of Karnataka and performance of industries particularly in Micro, Small and Medium industries.

I am happy to appreciate the efforts put in by all the officers and staff in this institute especially Shri. Rajkumar, IES, Deputy Director (EI), Smt. Neethu. K. Thomas, ISS, Assistant Director, Shri. D.Nataraja, Assistant Director (Stat), Shri.K.M.Balajee, Assistant Director (EI), Shri. Rajendran.B, Assistant Director (Hosiery), Shri. A. Shivakumar, Assistant Director (Mech), Smt. Sruthi G K, Assistant Director (EI), Shri. R. Anbu Kumaran, Assistant Director (IMT) in collecting the latest information available from different departments of Government of Karnataka and in bringing out this Industrial Profile report. I would also like to thank all Joint Directors of District Industry Centres, Senior Officers of Statistics Division of Govt. of Karnataka, Director of Industries and Commerce, for their valuable inputs during the preparation of this document. I sincerely hope that this report will be useful to all concerned with the development of Industries. It is needless to state that this document will serve as a valuable guide to the prospective entrepreneurs who are desirous of setting up of industries/enterprises in the state.

BANGALORE
15.06.2016

(S.N.RANGA PRASAD)
Director

Table of Contents

S. No.	Topic	Page No.
1.	Introduction & General Characteristics of the District	6
1.1	Location & Geographical Area	6
1.2	Topography	6
1.3	Availability of Minerals.	6
1.4	Forest	6
1.5	Administrative set up	6
1.6	Infrastructure	7
2.	District at a glance	7-9
2.1.1	Existing Status of Industrial Estates in the District	9
2.1.2	Existing Status of Industrial Areas in the District	9-10
3.	Industrial Scenario Of the district	10
3.1	Industry at a Glance	10
3.2	Year Wise Trend Of Units Registered	11
3.3	Details Of Existing Micro & Small Enterprises & Artisan Units In The District	11-12
3.4	Large Scale Industries / Public Sector undertakings	12-14
3.5	Major Exportable Item	14
3.6	Growth Trend	14
3.7	Vendorisation / Ancillarisation of the Industry	14
3.8	Major Exportable Item	14
3.9.1	Service Enterprises	14
3.9.2	Potentials areas for service industry	14
3.10	Potential for new MSMEs	15
4.	Existing Clusters of Micro & Small Enterprise	15
4.1	Detail Of Major Clusters	15
4.1.1	Manufacturing Sector	15
4.2	Service Sector	15
5	Steps to set up MS MEs	16-17
6	Additional information if any	18-20

Industrial Profile of Bangalore Rural District

1. Introduction & General Characteristics of the District

- Situated in the south eastern part of Karnataka.
- Spread across 4 talukas: Doddaballapur, Hosakote, Devanahalli, Nelamangala.
- Emerging as the most preferred destination for investors.
- Ample opportunities for investment in dairy development, horticultural activities, precision engineering, textiles, IT/ ITES and biotechnology.
- One of the largest silk producing areas in India.
- Bangalore International Airport is the second largest airport in India.
- Proposed ITIR with total investments of approximately US\$ 20 Billion (INR 90,000 crores) by 2030. Projected employment of 255,000 (direct) and 857,000 (indirect) 36% of the total exports

1.1 Location & Geographical Area.:

Located at 12° 15' and 13° 35' North latitude 77°05' and 78°00' East Longitude spread over 2259 sqkm. Consisting of four taluks. Some of the taluks were taken out of this district to carve out new district called Ramanagar in 2006. Due to proximity to Bangalore city and lot of industrial development exist.

1.2 Topography

Temperature	34° C (Max.) 15° C (Min.)
Average Rainfall	859.6 mm
Rivers	Arkavati, Kanva and Dakhina Pinakini
Area	2298 sq km
Population	987257 (As per 2011 census)

1.3 Availability of Minerals.

Production of Mineral		
S.NO.	NAME OF MINERAL	PRODUCTION in tones 2010-2011
MAJOR MINERAL		
1.	GRANITES	801
MINOR		
1.	FELSPAR	1400

SOURCE:- DEPT. OF MINES & GEOLOGY.,

1.4 FOREST : Has a forest area of 11322 hectares with different forest products

1.5 Administrative set up.: Currently in Bangalore Rural district, there are 2 divisions, 4 Talukas, 35 Hoblis, 1,713 inhabited and 177 uninhabited villages, 9 towns, and 229 Gram Panchayats. Proximity to Bangalore city will have its own impact on the district, with sizable daily- commuting population as the taluks are well connected by road and rail.

1.6 Infrastructure:

- Industrial Areas in 6 places and 2 Industrial Estates in the district.
- 1 Industrial Area and 1 Industrial Estate are proposed in the district.
- Suvarna Karnataka Development Corridor proposes a Readymade
- Garment Zone, Food Processing Zone and Media & Entertainment Zone covering the District.
- 3012 Acres of Land Bank in Nelamangala, Hoskote, Devanahalli Taluk.

Power

- Transmission in the district is being done by Bangalore Electricity Supply Company Limited (BESCOM)
- Power Consumption
 - Industry- 638.29 MU
 - Domestic- 207.47 MU

Water

- Three rivers - Arkavati, Kanva & Dakshina Pinakini
- 90% of the geographical area receives more than 650 mm of rainfall
- Reservoirs and tanks are extensively used for water storage

2. District at a glance

S.No	Particular	Year	Unit	Statistics
1	Geographical features			
(A)	Geographical Data			
	i) Latitude			12° 15' to 13° 35'
	ii) Longitude			77° 05' to 78° 00'
	iii) Geographical Area		Hectares	229519
(B)	Administrative Units			
	i) Sub divisions			2
	ii) Tehsils			4
	iii) Sub-Tehsil			8
	iv) Patwar Circle			17
	v) Panchayat Simitis			-
	vi) Nagar nigam			1
	vii) Nagar Palika			6
	viii) Gram Panchayats			98
	xi) Revenue villages			1050
	x) Assembly Area			5
2.	Population (As per Census 2011)			
(A)	Sex-wise			
	i) Male	2011	Nos	5,07,514
	ii) Female	2011	Nos	4,79,743
(B)	Rural Population	2011		7,19,564
3.	Agriculture			
A.	Land utilization			
	i) Total Area		Hectare	229519
	ii) Forest cover		"	11322

	iii) Non Agriculture Land		"	39978
	v) cultivable Barren land		"	11124
4.	Forest			
	(i) Forest		Ha.	11322
5.	Livestock & Poultry			
A.	Cattle			
	i) Cows		Nos.	164718
	ii) Buffaloes		Nos.	28672
B.	Other livestock			
	i) Goats		Nos.	94575
	ii) Pigs		Nos.	2027
	iii) Dogs & Bitches		Nos.	40485
	iv) Railways			
	i) Length of rail line		Kms	204.39
	V) Roads			
	(a) National Highway		Kms	205.00
	(b) State Highway		Kms	194.29
	(c) Main District Highway		Kms	656.05
	(d) Other district & Rural Roads		Kms	1725.11
	(e) Rural road/ Agriculture Marketing Board Roads		Kms	Incl.in item (d)
	(f) Kachacha Road		Kms	744.70
	(VI) Communication			
	(a) Telephone connection			57541
	(b) Post offices		Nos.	180
	(c) Telephone center		Nos.	103
	(d) Density of Telephone		Nos./1000 person	-
	(e) Density of Telephone		No. per KM.	-
	(f) PCO Rural		No.	-
	(g) PCO STD		No.	-
	(h) Mobile		No.	-
	(VII) Public Health			
	(a) Allopathic Hospital		No.	5
	(b) Beds in Allopathic hospitals		No.	430
	(c) Ayurvedic Hospital		No.	1
	(d) Beds in Ayurvedic hospitals		No.	6
	(e) Unani hospitals		No.	-
	(f) Community health centers		No.	1
	(g) Primary health centers		No.	47
	(h) Dispensaries		No.	-
	(i) Sub Health Centers		No.	55
	(j) Private hospitals		No.	167
			No.	-
	(VIII) Banking commercial			
	(a) Commercial Bank		Nos.	45
	(b) rural Bank Products		Nos.	14

	(c) Co-Operative bank products		Nos.	0
	(d) PLDB Branches		Nos.	4
	(IX) Education			
	(a) Primary school		Nos.	720
	(b) Middle schools		Nos.	598
	(c) Secondary & senior secondary schools		Nos.	201
	(d) Colleges		Nos.	46
	(e) Technical University		Nos.	7

Source: Directorate of Economics and Statistics, Govt. of Karnataka.

2.1.1 Existing Status of Industrial Estates in the District Bangalore Rural

S No.	Name of the Estate	Land acquired (In Hectare)	Land Developed (In Hectare)	Prevailing rate per Sqm	Numbers Formed		Numbers Allotted		Numbers Vacant		No. of units in production	
					Plots	Sheds /flats	Plots	Sheds /flats	Plots	Sheds /flat	Plots	Sheds /flats
1	Doddaballapur	20.26	20.26	2930	6	104	6	104	0	0	2	95
2	Hoskote	16.85	16.85	2580	32	69	28	65	4	4	10	42

Source : KIADB- Bangalore

2.1.2 Existing Status of Industrial Areas in the District Bangalore Rural

Sl. No.	Area	Acres
1	Bangalore Aerospace Park with Aerospace SEZ near BIAL	985
2	Basettihalli Doddaballapura IA 3rd Phase	736
3	Doddaballapura Apparel park –I& II Phase	459
4	Dobbaspeth Stage I, II and IV, Nelamangala Taluk	1225
5	Sompura Stage I and II Nelamangala	721
6	Hoskote IA	402
7	IT/BT park	67.5

Source : KIADB

Sl. No.	Industrial Estates	Extent (acres)
1	Doddaballapur	20
2	Hosakote	17
3	Nelamangala	119

Sl. No.	Industrial Areas	Extent (acres)
1	Doddaballapur Apparel Park Phase I	187
2	Doddaballapur Apparel Park Phase II	265
3	Dabaspeth Phase I	277
4	Dabaspeth Phase II	67
5	Sompura I & Stage	1,321
6	Sompura I Stage sub-layout	80
7	Awarahalli (Dabaspeth IV Phase)	844
8	Doddaballapur	331
9	Obhadenahalli (DBP III)	696

Sl. No.	Industrial Parks	Extent (acres)
1	Bengaluru IT Park	1,180
2	Bengaluru Aerospace Park	722
3	Bengaluru Aerospace SEZ	252
4	Bengaluru Hardware Park	849

Source : Invest Karnataka 2016

3. INDUSTRIAL SCENERIO OF BANGALORE RURAL DIST.

3.1 Industry at a Glance

Sr No	Head	Unit	Particulars (As on 31.03.2016)
1.	REGISTERED MSMEs	Nos	8639
2.	LARGE INDUSTRIAL UNITS	Nos	63
3.	EMPLOYMENT IN MSMEs	Nos	68511
4.	NO. OF INDUSTRIAL ESTATES	Nos	3
5.	NO. OF INDUSTRIAL AREA	Nos	9
6.	NO. OF INDUSTRIAL PARKS	Nos	4
7.	Total investment in MSMEs	In Lakhs	116816

3.2 YEAR WISE TREND OF UNITS REGISTERED

YEAR	NUMBER OF REGISTERED UNITS	EMPLOYMENT	INVESTMENT (lakh Rs.)
2005-06	578	2348	2040
2006-07	496	1962	1915
2007-08	258	4190	2819
2008-09	235	5016	5759
2009-10	223	5508	6838
2010-11	182	6588	7115
2011-12	272	4850	6762
2012-13	340	5780	8160
2013-14	383	3266	8462
2014-15	501	4839	14091
2015-16	2012	22279	52855

Source : Dist.Industry centre.

Key Industries



Aerospace, Engineering & Allied Industries –More than 12 % of the total MSME units in the district are engaged in this sector

Aerospace

- Developed Aerospace Park in 732 Acres and Aerospace SEZ on 252 acres of land near Bangalore International Airport
- Manufacturing of Aerospace components, & Sub Assemblies
- Maintenance, Repair and Overhaul activities related to aerospace applications



Sericulture

- Sericulture provides employment to over 51,700 people in Bangalore Rural district and textile industries in the district
- Approx 10 % of the total MSME units in the district are engaged in this sector



Agro, Food Processing & Horticulture

- The Government of Karnataka has approved the establishment of a 100 acres food park with a total cost of US \$ 5.45 Million.
- Large number of MSME units in the district are engaged in agri and food processing, creating a healthy ecosystem



Other focus sectors are::

- Information Technology
- Pharmaceuticals
- Automobiles
- Textiles
- Tourism

3.3 DETAILS OF EXISTING MICRO & SMALL ENTERPRISES AND ARTISAN UNITS IN THE DISTRICT

Sector wise break-up of investment and employment of MSME registered units

NIC	Classification	Units (No's)	Investment (Rs. in lakhs)	Employment (No's)
20	Food & Beverages	773	2180.00	3968
23-26	Textile Based	5133	8038.00	21371
27	Wood & Wood based	786	905.00	4202
29	Leather & Leather Based	215	168.08	1036
28	Printing & Stationery	318	189.00	1508
30	Rubber & Plastic Based	38	743.00	307
31	Chemical & Chemical Based	56	560.00	478
32	Glass & Ceramics	182	172.00	853
33	Basic Metal & Metal products	19	456.05	98
35	General Engineering / Mechanical products	128	2471.00	915
36	Electrical & Electronics	393	421.00	1598
-	Automobiles	282	291.00	1423
-	Transport & Equipments	12	16.17	98
-	Ferrous & Non Ferrous	263	180.6	1072
97	Job Work /Repairs	1885	839.00	6870
01	Other Services	1056	3680.00	5176
	Miscellaneous Products	1449	5703.00	5235

Source: District Industry Centre (As on 31.03.2016)

3.4 Large Scale Industries / Public Sector undertakings - Working Units

Sl No	Name & Address of the unit	Area of working
1	Bell Ceramics, Chokkahalli Village, Hosakote Tq.	Hosakote
2	Birla Super Bulk Terminal, Veerapura Near Railway Station Doddaballapura	Doddaballapura
3	BPL Ltd. Plot No. 28B, 29KIADB Indl. Area, D.B. Pura.	DB pura
4	Cadbury India Pvt. Ltd. Jodihanumanapalya, Kunigal 36th KM Stone, Nelamangala Tq.	Nelamangala
5	Celebration Apparel Ltd., KIADB Indl. Area, Hoskote B'lore, Rural District.	Hosakote
6	Chrysails Silk Pvt Ltd, Plot No.SW9&10, KIADB Apperal Park Doddaballapur	Doddaballapura
7	Dakshin Foundry Pvt. Ltd., Biswanahalli Village, Nelamangala, B'lore (R) trict.	Nelamangala
8	Denso Kirloskar (I) Pvt. Ltd. 30th KM. Tumkur Road, N.H. 4,	Nelamangala
9	Essilor Manufactring India Pvt. Ltd. KIADB Ind.Area, D.B. Pura	DB Pura
10	Everblue apparel Ltd., Apparel Park, Doddaballapura B'lore, Rural District.	DBPura
11	G.E.India Industries (P) Ltd., KAIDB Indl. Area, Hoskote	Hoskaote
12	Gemini Steel Tubes Ltd No.65 KIADB Industrial Area Hoskote	Hosakote
13	Glittek Granites Ltd., Plot No. 42, KIADB Indl. Area, Hosakote	Hosakote
14	Global Green Co. Ltd. Doddadhunnasandra Village, HSK Tq.	Hosakote
15	Gokaldas Exports (p) Ltd.,Industrial Area,	Doddaballapura
16	Gokaldas India (p) Ltd.,Industrial Area, Doddaballapur,	Doddaballapura

17	Gokuldas Images Pvt.Ltd., (Denim) Unit (1) KIADB Doddaballapur, B'lore Rural Dist.	Doddaballapura
18	Himatsinga Seide Ltd. Veerapura, KIADB Indl. Area, D.B. Pura Tq.	Doddaballapura
19	Himath Singhaka Siede Wovens Ltd. Apperal park , Doddaballapur.	Doddaballapura
20	Jodhani Papers Ltd., Plot No. 32 & 33, Industrial Area, Doddaballapura,	Doddaballapura
21	Karle International Unit (2)Mallarabanawadi Village, Kunigal Road, Nelamangal Tq.	Nelamangala
22	Kirloskar Electric Co., Ltd..Govenahalli, Nelamangala tq	Nelamangala
23	Kurlon Ltd. Unit- Dobespet, Nel Tq.	Nelamangala
24	LM Glass Fiber India Ltd., Dabaspel Industrial area, Nelamangala Tq.	Nelamangala
25	M/ s Karle Exports Ltd, Unit(1) Kunigal Road, Nelamangala	Nelamangala
26	M/s Bombay Rayons Ltd,. Apperal park , Doddaballapur.	Doddaballapura
27	M/s Indane India Pvt Itd Raghunathapura Doddaballapura .	Doddaballapura
28	M/s Indigo Blues Plot No. 2, KIADB Industrial Area Doddaballapur.	Doddaballapura
29	M/s Kemweell Bio Pharma Pvt Ltd., T.Begur, N H-4, Nelamangala.	Nelamangala
30	M/s Magod Laser Machining Pvt Ltd., Dobaspel Industrial Area Nelamangal	Nelamangala
31	M/S Mile Stone Global Ltd Plot No.42,KIADB Indl.Area, Hosakote	Hosakote
32	M/S Powerica Ltd, Bommanahalli, Tumkur Road, Nelamangala Tq	Nelamangala
33	M/S Tata Tea Ltd, Malngattanahalli, Nel. Tq.	Nelamangala
34	M/S V-3 Engineers, Deganahalli, Nelamangal Tq.	Nelamangala
35	M/S Vintac Ltd, Boodihal village, Nelamangal Taluk	Nelamangala
36	Metropol Overseas Ltd., Survey No. 100, Hydaluv Village, Nelamangala taluk	Nelamangala
37	Naturo Food & Fruit Products Pvt. Ltd., No.34/1, EkarajapurVillage, Sulibele Hobli, Hosakote Taluk	Hosakote
38	Otto Bilz India Pvt. Ltd. 5B/6A, KIADB Indl. Area, DBP Tq.	Doddaballapura
39	Payne (India) Pvt.Ltd., 2nd PH, Dobbospet Industrial Area, Nelamangala Tq.	Nelamangala
40	Pepsi Co India Holdings Ltd. 34th K.M, Stone, NH4, TEPPADA & Thonachinakuppe Village, Nel. Tq.	Nelamangala
41	Rittal India Pvt. Ltd., No.238 KIADB Industrial area, Doddaballapur	Doddaballapura
42	Sami Labs Ltd., Phase-11,KIADB 1A, Dobbaspel, Nelamangala Tq.	Nelamangala
43	Silver Spark Apparel Ltd. No.55, Majara Hosahalli, Kasaba Hobli, D.Pura Tq.	Doddaballapura
44	Swan Silk Ltd. Plot No.169,Bypass Road, NelamangalaTq.	Nelamangala
45	TD Power Systems Pvt.Ltd, Doaspel Industrial Area, Nelamangala TQ	Nelamangala
46	Tractors & Farm Equipment Ltd Indl. Area, D.B.Pura	Doddaballapura
47	Tulsyan VEC Limited Plot No 7 A KIADB Industrial area Doddaballapur	Doddaballapura
48	United Breweries Ltd.Gangadaranapalya, Nelamangala Tq.	Nelamangala
49	Vijaya Steels Ltd. Gangadharana Palya, Nel. Tq.	Nelamangala
50	Vishal Precision Steel Tubes & Strips Pvt. Ltd. Plot No. 47, Indl. Area, Hosakote	Hosakote

51	Volvo India Pvt. Ltd., Yelachanahalli, Thavarekere, Hosakote Tq.	Hosakote
52	Yamuna Industries Ltd.Chokkahalli, Indl. Area, Hosakote Tq.	Hosakote
53	Akzo Noble Coatings India Pvt Ltd. Hokote Indl Area, Hoskore, Bangalore Rural District.	Hosakote
55	Emmvee Solar Systems Pvt Ltd. No.70/3 Dabapet Industrial Area, Nelamangala, Pemmanahalli, Bangalore Rural District.	Nelamangala
56	Indo-Us Mim Tec Pvt Ltd. 45-P KIADB Industrial Area, Hoskore, Bangalore Rural District-562 114.	Hosakote
57	Kurlon Ltd. No. 22& 23, KIADB Industrial Area, Dabapet, Nelamangala, Bangalore Rural District.	Nelamangala
58	Microtex India Ltd. Plot No.33, 2nd Cross, Hokote Indl Area, Hoskore, Bangalore Rural District.	Hosakote
59	Pacific Industries Ltd. Sy.No.13 NH-48, Kempalinganahalli, Nelamangala Taluk.	Nelamangala
60	Praxair India Pvt Ltd. KIADB Industrial Area, Doddaballapura Taluk.	Doddaballapura
61	Recon Limited. Boddihal Village, Nelamangala Taluk.	Nelamangala
62	Suguna Poultry Farm Ltd, No.107 to 110, Ekarajpura, Hoskote.	Hosakote
63	Tata Iron & Steel Company Ltd. Veerapura, Hoblikasaba Doddaballapura Taluk.	DB Pura

Source: District Industry Centre

3.5 Major Exportable Item

Garments, Automobile parts, Electronic goods, Granites, Ophthalmic lenses,

3.6 Growth Trend

Trend in the growth in respect of Garments, Automobile parts, Granites and lenses exist in this district.

3.7 Vendorisation / Ancillarisation of the Industry:

Ancillary units in the field of Automobile parts, Garments, Engg. Products can be developed in this district.

3.8. Major Exportable Item

Silk and Automobile products

3.9.1 Service Enterprises

Service enterprises in respect of Xerox out lets, DTP centre, ITES related activities are possible in this district.

3.9.2 Potentials areas for service industry

Aerospace, Engineering & Allied Industries –More than 12 % of the total MSME units in the district are engaged in this sector Aerospace . Hence more potential exist in these areas and also in automobile industry.

3.10 Potential for new MSMEs

Aerospace, Engineering & Allied Industries:

- More than 12 % of the total MSME units engaged in this sector
- Development of Aerospace Park in 732 acres and Aerospace SEZ on 252 acres near Kempegowda International Airport, Bengaluru
- Manufacturing of Aerospace components, & Sub Assemblies

Sericulture:

- Sericulture provides employment to over 51,700 people
- 10 % of the total MSME units in the district are engaged in this sector

Agri, Food Processing & Horticulture:

- GoK has approved the establishment of a 100 acre Food Park with a total cost of USD 5.45 Mn

Other focus sectors are:

Information Technology

- Development of Information Technology Investment Region (ITIR) Near Devanahalli
 - Pharmaceuticals
 - Textiles
 - Automobiles
 - Tourism

4. Existing Clusters of Micro & Small Enterprise

4.1 DETAIL OF MAJOR CLUSTERS

4.1.1 Service Sector

There is good scope for clusters in service sector also. But no clusters are developed and exist in this district.

4.2 Manufacturing Sector

There is good scope for clusters in Bangalore Rural areas. But no clusters are developed and exist in this district.

5. STEPS TO SET UP MSMEs

Following are the brief description of different agencies for rendering assistance to the entrepreneurs.

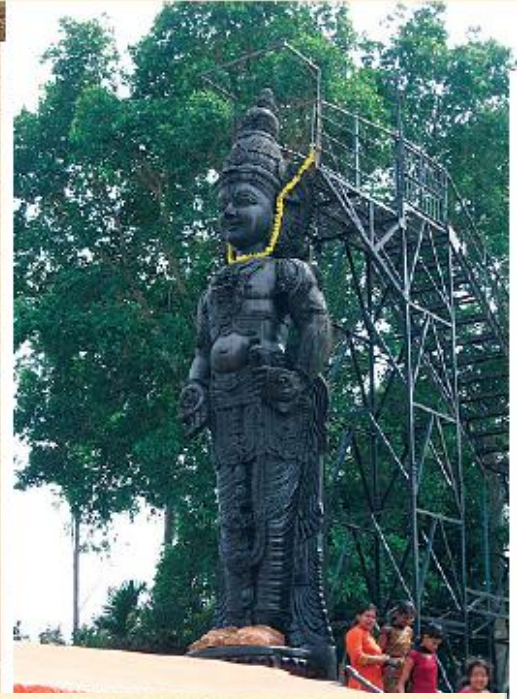
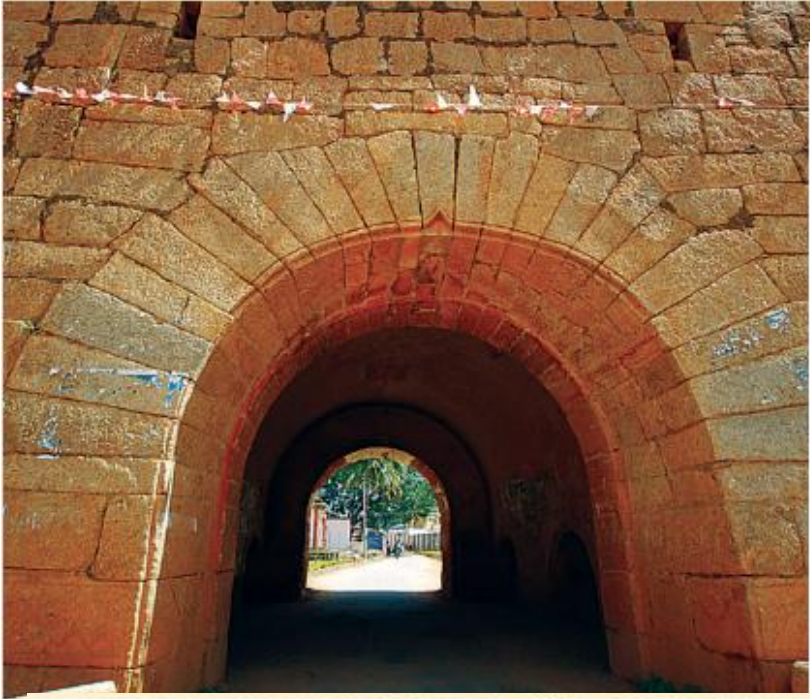
S.No.	Type of assistance	Name and address of agencies
1.	Registration of MSMEs	Online Registration. www.udyogaadhaar.gov.in Director, MSME-Development Institute Ministry of MSME, Govt. of India, Rajaji Nagar Industrial Estate, West of Chord Road, Bangalore. 560010 ☎ Phone : 080-23151581/82/83 ✉ e-mail: dcidi-bang@dcmsme.gov.in www.msmedibangalore.gov.in
2.	Identification of Project Profiles, Techno-economic and Managerial consultancy Services , Market survey and economic survey reports.	MSME-Development Institute Ministry of MSME, Govt. of India, Rajaji Nagar Industrial Estate, West of Chord Road, Bangalore. 560010 ☎ Phone : 080-23151581/82/83 ✉ e-mail: dcidi-bang@dcmsme.gov.in www.msmedibangalore.gov.in Chief Executive Officer & Chief Adviser Technical Consultancy Services Organisation of Karnataka (A Govt. of Karnataka Organisation) 4 th Floor, Basava Bhavan, Basaveshwara Circle, Bangalore 560 001. ☎ Phone : 080-22266134/2226152/41512382 ✉ e-mail: tecsok1@airtelmail.in www.tecsok.com
3.	Industrial Land	Chief Executive Officer & Executive Member Karnataka Industrial Areas Development Board (KIADB) 4 th & 5 th Floor, East Wing, Khanija Bhavan, Race Course Road, Bangalore. – 560001 ☎ Phone : 080-22265383/22267900 ✉ e-mail: kiadb@mail.nic.in www.kiadb.in
4.	Industrial Shed	Chairman Karnataka State Small Industries Development Corporation Limited., (KSSIDC), Rajaji Nagar Industrial Estate, West of Chord Road, Bangalore. 560010 ☎ Phone : 080-23407011 www.kssidc.kar.nic.in
5.	Financial Assistance	All Nationalized Banks Managing Director Karnataka State Financial Corporation (KSFC) No. 1/1, Thimmaiah Road, Bangalore. 560052, ☎ Phone : 080-2263322 ✉ e-mail: info@ksfc.in www.ksfc.in
6.	For Raw Materials under Govt. Supply	Chairman Karnataka State Small Industries Development Corporation Limited., (KSSIDC) Rajaji Nagar Industrial Estate, West of Chord Road, Bangalore. 560010 ☎ Phone : 080-23407011 www.kssidc.kar.nic.in General Manager National Small Industries Corporation (NSIC) No. 25, First Main Road, KSSIDC Industrial Estate, 6 th Block, Rajaji Nagar, Bangalore. 560010 ☎ Phone : 080-23109059/23307791/23147858 ✉ e-mail: boban@nsic.co.in www.nsic.co.in
7.	Plant & Machinery under hire/purchase basis	General Manager National Small Industries Corporation (NSIC) No. 25, First Main Road, KSSIDC Industrial Estate, 6 th Block, Rajaji Nagar, Bangalore. 560010 ☎ Phone : 080-23109059/23307791/23147858 ✉ e-mail: boban@nsic.co.in www.nsic.co.in
8.	Power / Electricity	Bangalore Electrical Supply Corporation, BESCOM

		H.O. Bangalore
9.	Technical Know-How	Managing Director Karnataka Council for Technological Upgradation (KCTU) 4th Floor, Basava Bhavan, Basaveswara Circle, Bangalore - 560001 ☎ Phone : 080-22250722 ☒ e-mail: md-kctu-ka@nic.in ☒ e-mail: info-kctu-ka@nic.in www.kctu.kar.nic.in
10.	Quality & Standard	Scientist 'F' & Head Bureau of Indian Standards (BIS) Peenya Industrial Estate, 1 st Stage, Tumkur Road, Bangalore-560058 ☎ Phone : 080-28394955/283949656 ☒ e-mail: bnbo@bis.gov.in www.bis.org.in
11.	Marketing & Export Assistance	Visvesvaraya Trade Promotion Centre (VTPC) III Floor, 'A' Block, BMTC Complex, Shantinagar, Double Road, Bangalore -560027. ☎ Phone 080-22230853 / 22210633 / 22534444 ☒ e-mail: md@vtpckarnataka.gov.in www.vtpckarnataka.gov.in Engineering Export Promotion Council (EEPC) Sub-Regional Office, 2nd Floor, Vinayaka Complex, 44/45 Residency Road Cross, Bangalore- 560025 ☎ Phone : 080-25581396/25588619 ☒ e-mail: eepcsroblr@eepcindia.net www.eepcindia.com EXIM Bank India Ramanashree Arcade, Floor 4, 18 M G Road, Bangalore. ☎ Phone : 080-25585755 ☒ e-mail: eximbro@eximbankindia.in www.eximbankindia.in
12.	Other Promotional Agencies	Managing Director Karnataka Udyog Mitra 3rd Floor, Khanija Bhavan (East Wing), No.49, Race Course Road, Bangalore – 560 001 ☎ Phone : 080-22282392/2228 5659/2238 1232/2228 6632 ☒ e-mail: md@kumbangalore.com www.kum.karnataka.gov.in

6. Any other important additional information of the district

Tourism:

- **Devanahalli Fort**, built in 1501 by the Avati clan. This fort was captured by Haider Ali in 1791, and renovated and converted into a stone fort
- **Sivagange**: This destination's spring water is considered to be very sacred, while the hillock is populated with a few temples
- **Ghati Subramanya Temple**, one of the popular pilgrim centers located near Doddaballapur of the Bangalore Rural district





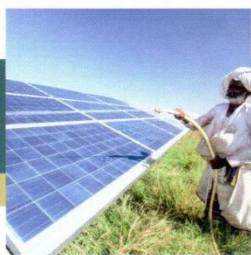
MSME SCHEMES

MSME OPERATES A NUMBER OF PROMOTIONAL SCHEMES FOR THE MSE SECTOR:

- ★ Credit Linked Capital Subsidy Scheme for Technology Upgradation (CLCSS)
- ★ Credit Guarantee Fund Trust for Micro and Small Enterprises (CGTMSE)
- ★ ISO 9001/ISO 14001 HACCP Certification Reimbursement Scheme.
- ★ Cluster Development Programme for identified Cluster of MSE's
- ★ Market Development Assistance International Trade Fairs (For Individual MSEs)
- ★ National Awards for outstanding MSME Entrepreneurs, R&D efforts in MSME Sector
- ★ Quality products in MSE sector and Innovation effort (For Individual MSMEs)
- ★ TREAD Scheme for Women (Individual Regd. Association & NGOs)
- ★ Capacity Building/ Seminar for Industrial Associations
- ★ Public Procurement Policy - MSEs 2012

NATIONAL MANUFACTURING COMPETITIVENESS PROGRAMME (NMCP) SCHEMES FOR MSMEs UNDER PPP MODEL:

- ★ Marketing Support / Assistance to MSMEs (BAR Code)
- ★ Support for Entrepreneurial and Managerial Development of MSMEs through Incubators
- ★ Enabling Manufacturing Sector to be Competitive through Quality Management Standards & quality Technology Tools (QMS/QTT)
- ★ Building Awareness on Intellectual Property Rights for MSMEs (IPR)
- ★ Lean Manufacturing Competitiveness Scheme for MSMEs (LMCs)
- ★ Design Clinic Scheme for design expertise to MSMEs Manufacturing sector (DESIGN)
- ★ Marketing Assistance and Technology Upgradation Scheme for MSMEs (MATU)
- ★ Technology and Quality Upgradation support to MSMEs (TEQUP)
- ★ Promotion of Information & Communication Technology in Indian MSME Sector (ICT)



Government of India

Ministry of Micro, Small & Medium Enterprises

MSME DEVELOPMENT INSTITUTE

Rajajinagar Industrial Estate, Bengaluru - 560 010, Karnataka, India

T: 080 23151581-82-83 | F: 080 23144506

E: dcdi-bang@dcmsme.gov.in | W: www.dcmsme.gov.in

For more details visit our website:

www.msmedibangalore.gov.in